

## Recombinant bovine/porcine IGF-1 protein (Qk113-FG)



**Type:** Food grade proteins

**Available for purchase:** Unit Size (µg): 25, 50, 100, 500, 1000

Buy online with secure credit card or purchase order.

[View this product and buy online](#)

### Product Information

---

Bovine/porcine insulin-like growth factor 1 (IGF-1) protein is used in the maintenance of induced pluripotent stem cells (iPSC) and is necessary for cell growth in the absence of insulin. IGF-1 promotes the proliferation of many cell types, including embryonic stem cells (ESC) and mesenchymal stem cells (MSC).

Qkine bovine/porcine IGF-1 is a [high quality food grade](#) 8 kDa protein, Qkine growth factors are [animal origin-free](#) (AOF) and carrier-protein free (CF) for consistent stem cell culture and cultured meat applications.

#### Alternative protein names

Insulin-like Growth Factor-I, Somatamedin-C, Mechano Growth Factor (MGF), IGF1, IGF 1

#### Molecular weight

8 kDa

#### Protein Uniprot number

High quality bovine/porcine IGF-1 protein (Uniprot: P07455)

#### Species reactivity

- bovine
- porcine

## **Product Information**

- High quality food grade recombinant protein
- >98%, by SDS-PAGE quantitative densitometry
- Animal origin-free (AOF) and carrier protein-free
- Expressed in *E. coli*
- Manufactured in the UK under a food manufacturing HACCP regime
- Lyophilized from acetonitrile, TFA

## **Reconstitution instructions**

- Resuspend in sterile-filtered water at >50 µg/ml

## **Featured applications**

- Cell culture media optimization and replacement of insulin in defined media
- Cellular agriculture and cultivated meat cell culture media optimization
- Cellular agriculture process development

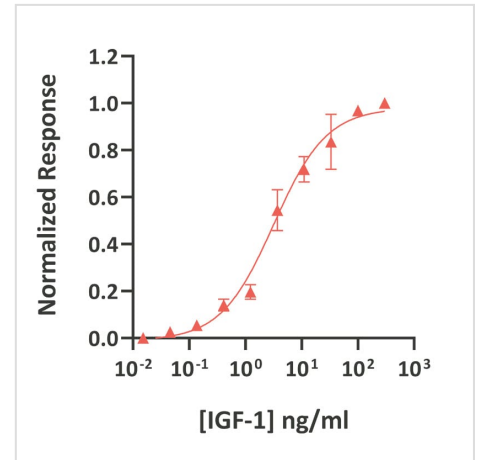
## **Further quality assays**

- Mass spectrometry: single species with expected mass
- Recovery from stock vial: >95%
- Endotoxin: <0.05 EU/µg protein
- Full raw materials traceability, allergen analysis, CoO, CoA, beta-lactam-free and animal origin-free certification available

# Scientific Information

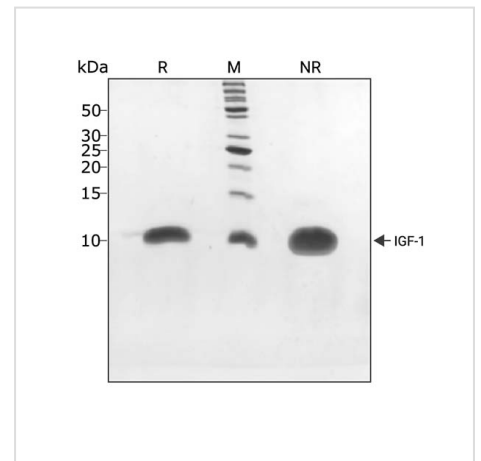
## Bioactivity

IGF-1 activity was determined using the Promega serum response element luciferase reporter assay in transfected MCF-7 cells. EC50 = 3.5 ng/ml (0.45 nM). Cells are treated in triplicate with a serial dilution of IGF-1 for 4 hours. Firefly luciferase activity is measured and normalized to the control Renilla luciferase activity.



## Purity

IGF-1 protein migrates as a single band at 10 kDa in non-reducing (NR) conditions and upon reduction (R). No contaminating protein bands are visible. Purified recombinant protein (3 µg) was resolved using 18% w/v SDS-PAGE in reduced (+β-mercaptoethanol, R) and non-reduced (NR) conditions and stained with Coomassie Brilliant Blue R250. Data from Qk047 batch #104331.



**Original product page:** <https://qkine.com/product/recombinant-bovine-porcine-igf-1-protein-qk113-fg/>

**PDF generated:** 13 May 2026

Copyright © 2026 by Qkine Ltd. All rights reserved including graphics and images.